
MEMORANDUM

TO: PARKS AND RECREATION ADVISORY BOARD

FROM: JONATHAN SCHILK, LANDSCAPE ARCHITECT, PARKS/DESIGN & DEVELOPMENT DIVISION

CC: LAINE POTTER, MANAGER, PARKS/DESIGN & DEVELOPMENT
NICOLE OLIVER, DIRECTOR, PARKS AND RECREATION DEPARTMENT

SUBJECT: LORRAINE ELLIS PARK PLAYGROUND RENOVATION – INFORMATIONAL UPDATE

DATE: JULY 7, 2022

The purpose of this project is to replace the existing playground equipment originally installed in 1990, provide ADA access, install standard park amenities, and repair the existing park sign.

The equipment selection is based on input from the residents of the Columbia Neighborhood, staff experience in providing a fun and challenging play experience. The design solution will also provide vestibular and proprioception stimulation, opportunities for risk, and a setting to build social skills, meet playground safety standards and ADA requirements.

Staff sought public input for ideas and preferences for new playground equipment in 2022, beginning with data collection during the February Columbia Neighborhood Association membership drive. More input was collected at two Columbia Neighborhood Association Meetings. Staff processed the information and posted six different playground configurations on Engage Bellingham for public response. Overall, the responses favored standard playground accoutrement to serve the needs of tots and school age kiddos, such as:

- slides
- tall slide (existing is 11', proposed is 8')
- swings
- imagination play
- minimize reduction of the lawn area
- open ended, non post and platform

Another round of Engage Bellingham is planned to show three options later this month. These options incorporate respondent preferences to varying degrees. See Exhibit B.

The Option receiving the most votes Staff will go into further design.

Attachments:

- Exhibit A – Lorraine Ellis Park Playground Facts
- Exhibit B - Playground options to be presented in the next round of Engage Bellingham

Lorraine Ellis Park Playground Facts

The purpose of this project is to replace existing playground facilities, provide accessible path of travel between the new playground and a new accessible on street parking.

References to the .46-acre park first occur in 1945. The Miracle playground equipment was installed in 1990 over pea gravel fall surfacing. No accessible path of travel exists anywhere around or inside the park making the playground equipment non-compliant with Section 240 of ADAAG. The playground equipment itself is weathered, and non-compliant with ASTM f1487 Standard Consumer Performance Specification for Playground Equipment for Public Use.

The work includes pre-school playground equipment, fall surfacing containment, drainage, an accessible path of travel between the playground and the edge of the park. An on-street barrier-free parking slot will be provided if project funds permit.

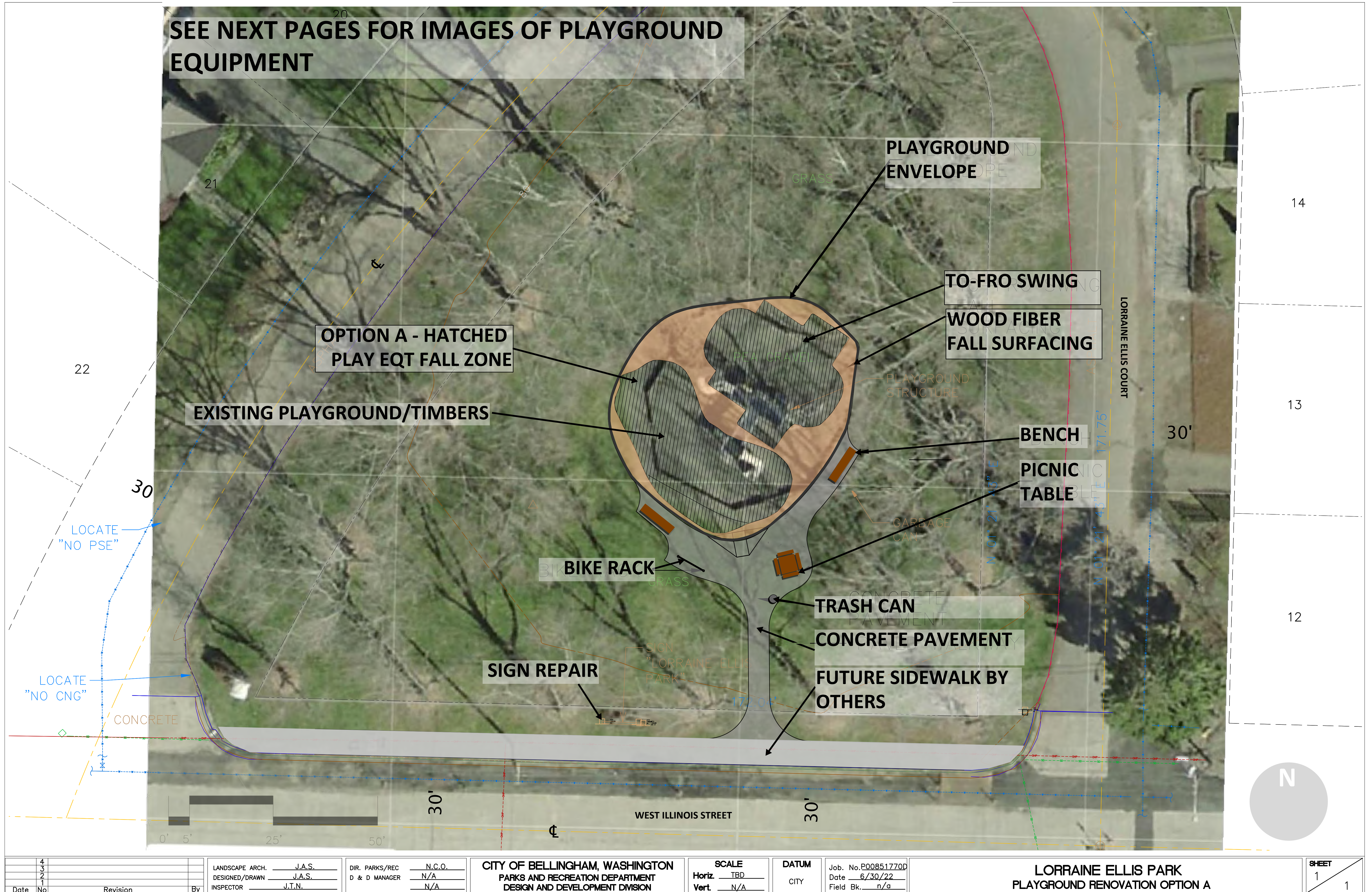
Budget: \$250,000 in Park Impact Fees for design and construction phases.

Schedule: Design in 2022 and Construction in 2023



Figure 1 Not to scale, north is up

OPTION A CONCEPT WITH SWING



The intent of this exhibit is to show the relative size of the playground option to existing

Highlights:

- * 2-bay swing
- * climbing
- * talk tube
- * play panels
- * climbers
- * 8' slide
- * 4' slide

This sheet is intended to show the playground equipment. See the playground option plan view for correct playground envelope and other improvement locations.



Option A

Highlights:

- * 2-bay swing
- * climbing
- * talk tube
- * play panels
- * climbers
- * 8' slide
- * 4' slide

This sheet is intended to show the playground equipment. See the playground option plan view for correct playground envelope and other improvement locations.



Option A

Highlights:

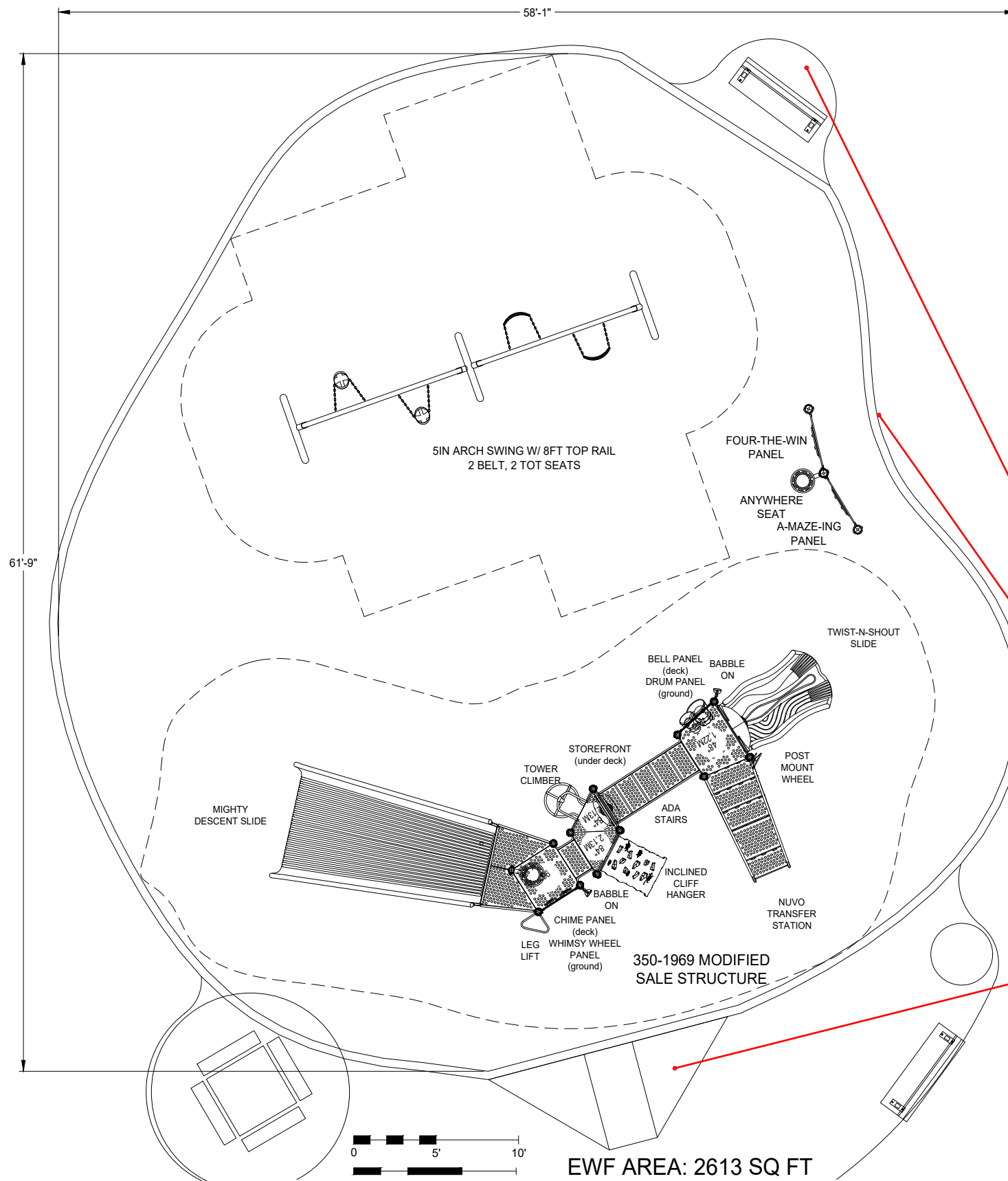
- * 2-bay swing
- * climbing
- * talk tube
- * play panels
- * climbers
- * 8' slide
- * 4' slide

This sheet is intended to show the playground equipment. See the playground option plan view for correct playground envelope and other improvement locations.



Option A

- Highlights:**
- * 2-bay swing
 - * climbing
 - * talk tube
 - * play panels
 - * climbers
 - * 8' slide
 - * 4' slide



This sheet is intended to show the playground equipment. See the playground option plan view for correct playground envelope and other improvement locations.

Option A



Northwest Playground Equipment, Inc.
 BUILDING COMMUNITY THROUGH PLAY
 P.O. Box 2410 Issaquah, WA 98027
 Toll Free: 1.800.726.0031
 www.nwplayground.com
 sales@nwplayground.com

EQUIPMENT SIZE:

USE ZONE:

AREA: PERIMETER:
SEE PLAN

FALL HEIGHT:
8 Ft.

USER CAPACITY: AGE GROUP:
62 2-5 & 5-12

ADA SCHEDULE	Total Elevated Play Activities: 6		
	Total Ground-Level Play Activities: 10		
	Accessible Elevated Activities	Accessible Ground-Level Activities	Accessible Ground-Level Play Types
Required	3	2	2
Provided	6	10	5

- ASTM F1487-17
- CPSC #325



PROJECT NO:
 IHD_233_22AR1

SCALE:
 1/8" = 1'-0"

DRAWN BY:
 BPL

Paper Size

DATE:
 25-May-22

B

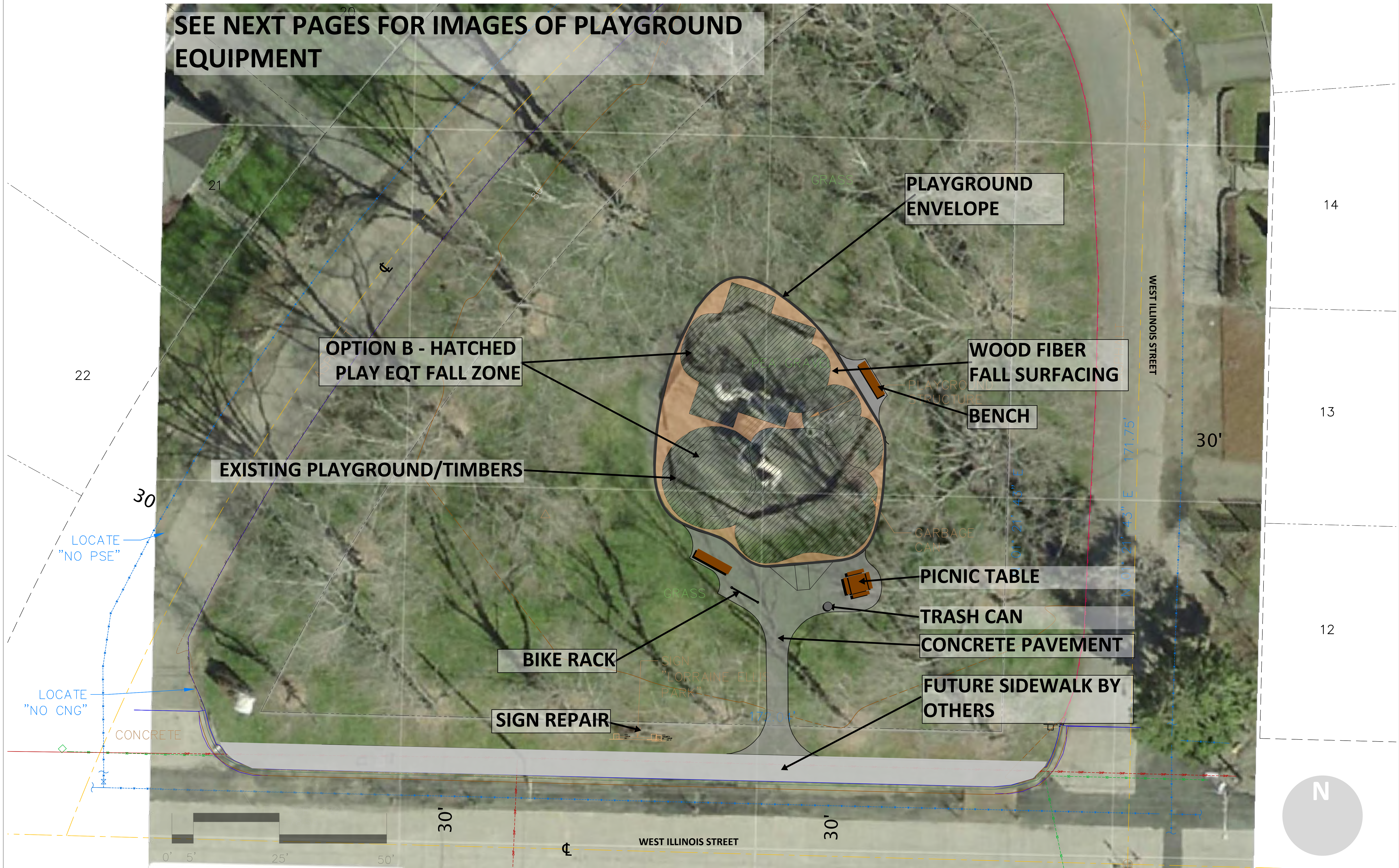
LORRAINE ELLIS PARK

OPTION A - REV 1

EXHIBIT B

OPTION B CONCEPT WITH SWING

SEE NEXT PAGES FOR IMAGES OF PLAYGROUND EQUIPMENT



4	LANDSCAPE ARCH. J.A.S.	DIR. PARKS/REC N.C.O.	CITY OF BELLINGHAM, WASHINGTON PARKS AND RECREATION DEPARTMENT DESIGN AND DEVELOPMENT DIVISION	SCALE Horiz. TBD Vert. N/A	DATUM CITY	Job. No. P00851770D Date 6/30/22 Field Bk. n/a	LORRAINE ELLIS PARK PLAYGROUND RENOVATION OPTION B	SHEET 1 / 1
3	DESIGNED/DRAWN J.A.S.	D & D MANAGER N/A						
2	INSPECTOR J.T.N.	N/A						

The intent of this exhibit is to show the relative size of the playground option to existing

Highlights:

- * includes 2-bay swing
- * open ended climbing/traverse net-arch structure
- * rocker/spring toys
- * spinner
- * dome climber
- * stepping forms
- * no climbing dome

This sheet is intended to show the playground equipment. See the playground option plan view for correct playground envelope and other improvement locations.



Option B

PHD_233_22BKT Color Option : A

EXHIBIT B

Highlights:

- * includes 2-bay swing
- * open ended climbing/traverse net-arch structure
- * rocker/spring toys
- * spinner
- * dome climber
- * stepping forms
- * no climbing dome

This sheet is intended to show the playground equipment. See the playground option plan view for correct playground envelope and other improvement locations.



Option B

Highlights:

- * includes 2-bay swing
- * open ended climbing/traverse net-arch structure
- * rocker/spring toys
- * spinner
- * dome climber
- * stepping forms
- * no climbing dome

This sheet is intended to show the playground equipment. See the playground option plan view for correct playground envelope and other improvement locations.

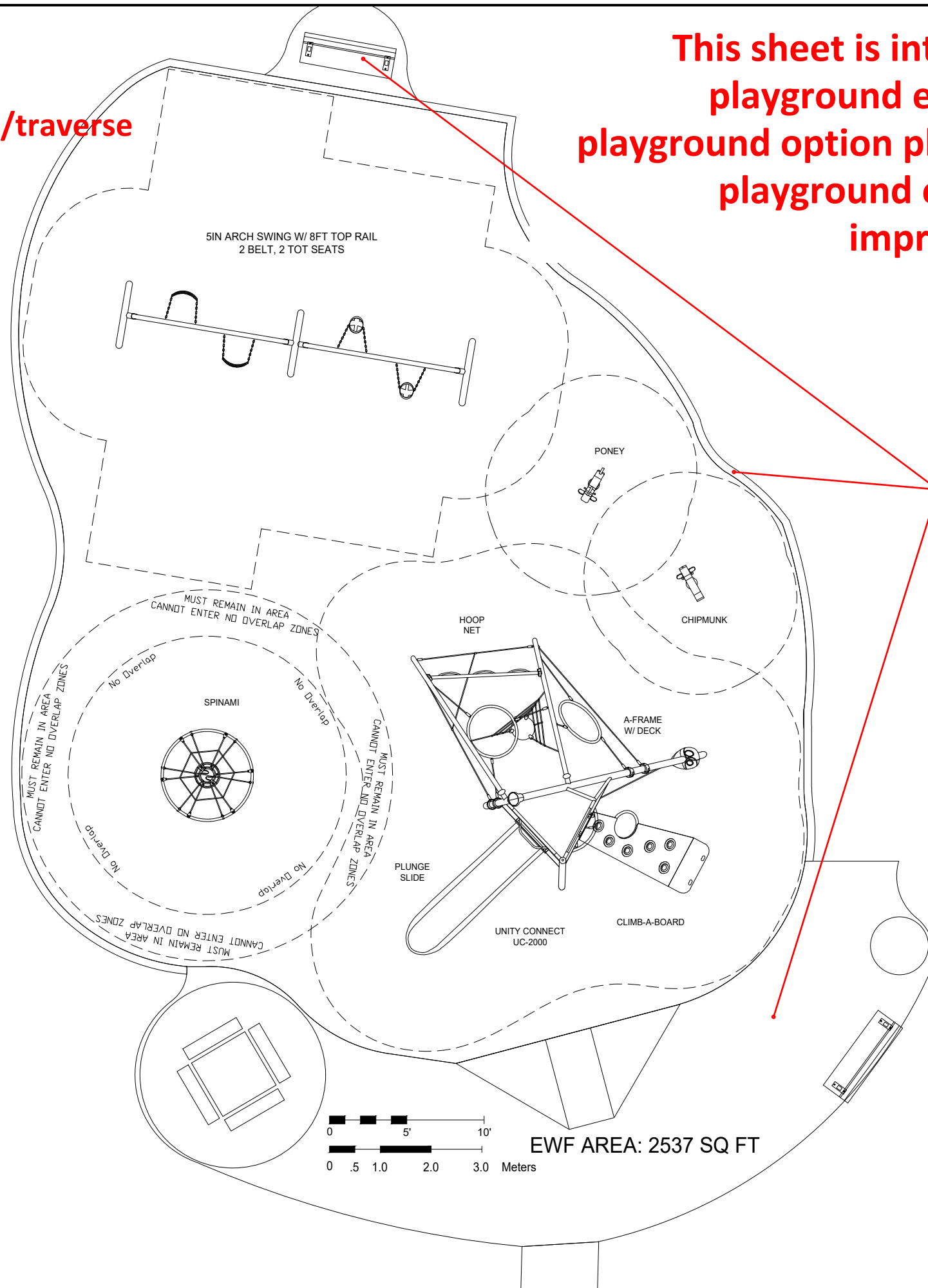


Option B

Highlights:

- * includes 2-bay swing
- * open ended climbing/traverse net-arch structure
- * rocker/spring toys
- * spinner
- * dome climber
- * stepping forms
- * no climbing dome

This sheet is intended to show the playground equipment. See the playground option plan view for correct playground envelope and other improvement locations.



final alignment of playground envelope site amenities ada ramp to be determined



Northwest Playground Equipment, Inc.

BUILDING COMMUNITY THROUGH PLAY

P.O. Box 2410 Issaquah, WA 98027
Toll Free: 1.800.726.0031
www.nwplayground.com
sales@nwplayground.com

EQUIPMENT SIZE:

USE ZONE:

AREA: PERIMETER:

SEE PLAN

FALL HEIGHT:
8 Ft.

USER CAPACITY: 53 AGE GROUP: 5-12

ADA SCHEDULE	Total Elevated Play Activities: X		
	Total Ground-Level Play Activities: X		
	Accessible Elevated Activities	Accessible Ground-Level Activities	Accessible Ground-Level Play Types
Required	X	X	X
Provided	X	X	X

- ✓ ASTM F1487-17
- ✓ CPSC #325



PROJECT NO:
IHD_233_22BR1

SCALE:
1/8" = 1'-0"

DRAWN BY:
BPL

Paper Size

DATE:
25-May-22

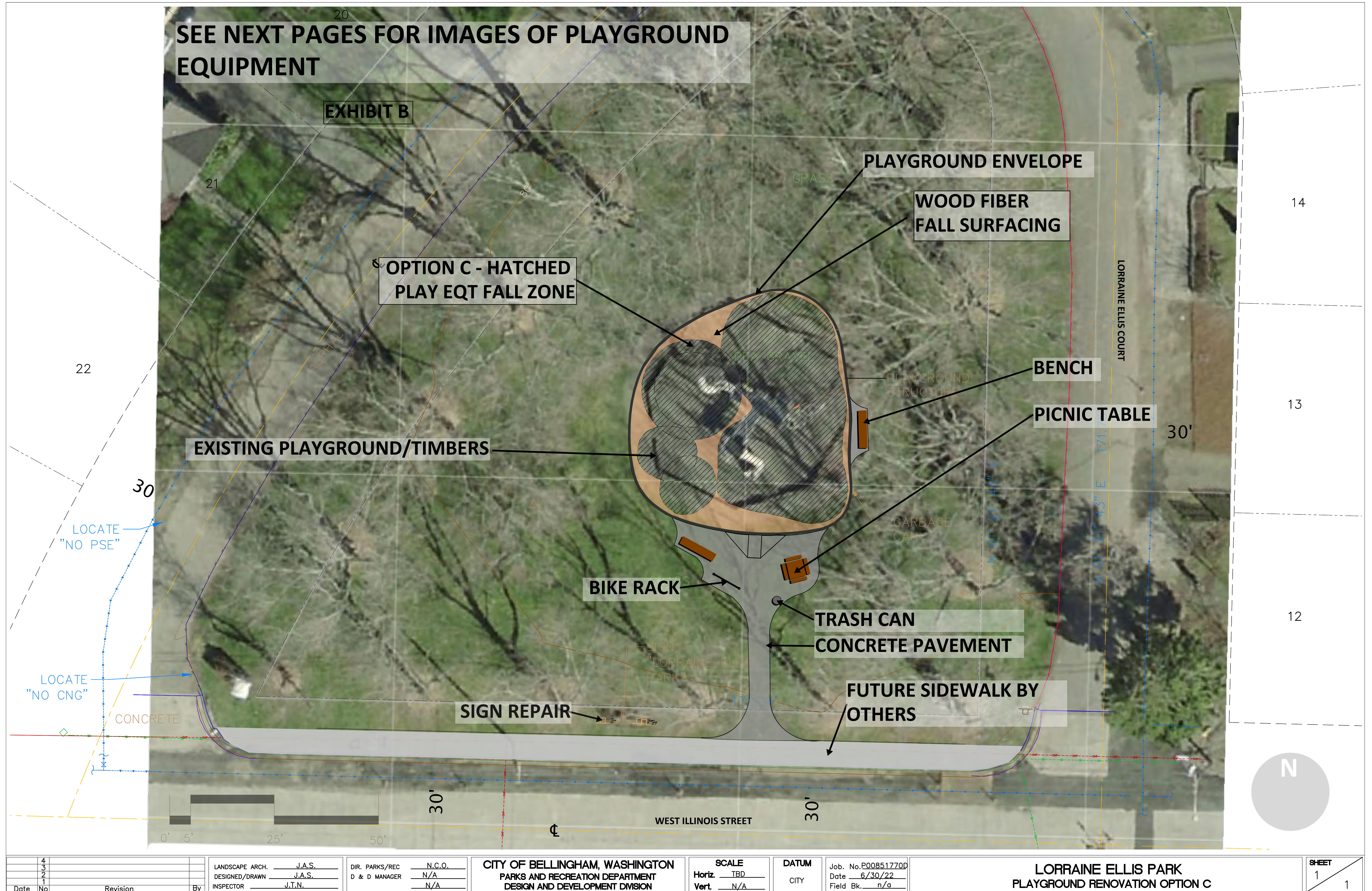
B

Option B

LORRAINE ELLIS PARK

EXHIBIT B

OPTION C CONCEPT - NO SWING



The intent of this exhibit is to show the relative size of the playground option to existing

EXHIBIT B

Highlights:

- * no swing
- * open ended climbing/traverse net-arch structure
- * rockers
- * spinner
- * dome climber
- * stepping forms

This sheet is intended to show the playground equipment. See the playground option plan view for correct playground envelope and other improvement locations.



Option C

Highlights:

- * no swing
- * open ended climbing/traverse net-arch structure
- * rockers
- * spinner
- * dome climber
- * stepping forms

This sheet is intended to show the playground equipment. See the playground option plan view for correct playground envelope and other improvement locations.



Option C

Highlights:

- * no swing
- * open ended climbing/traverse net-arch structure
- * rockers
- * spinner
- * dome climber
- * stepping forms

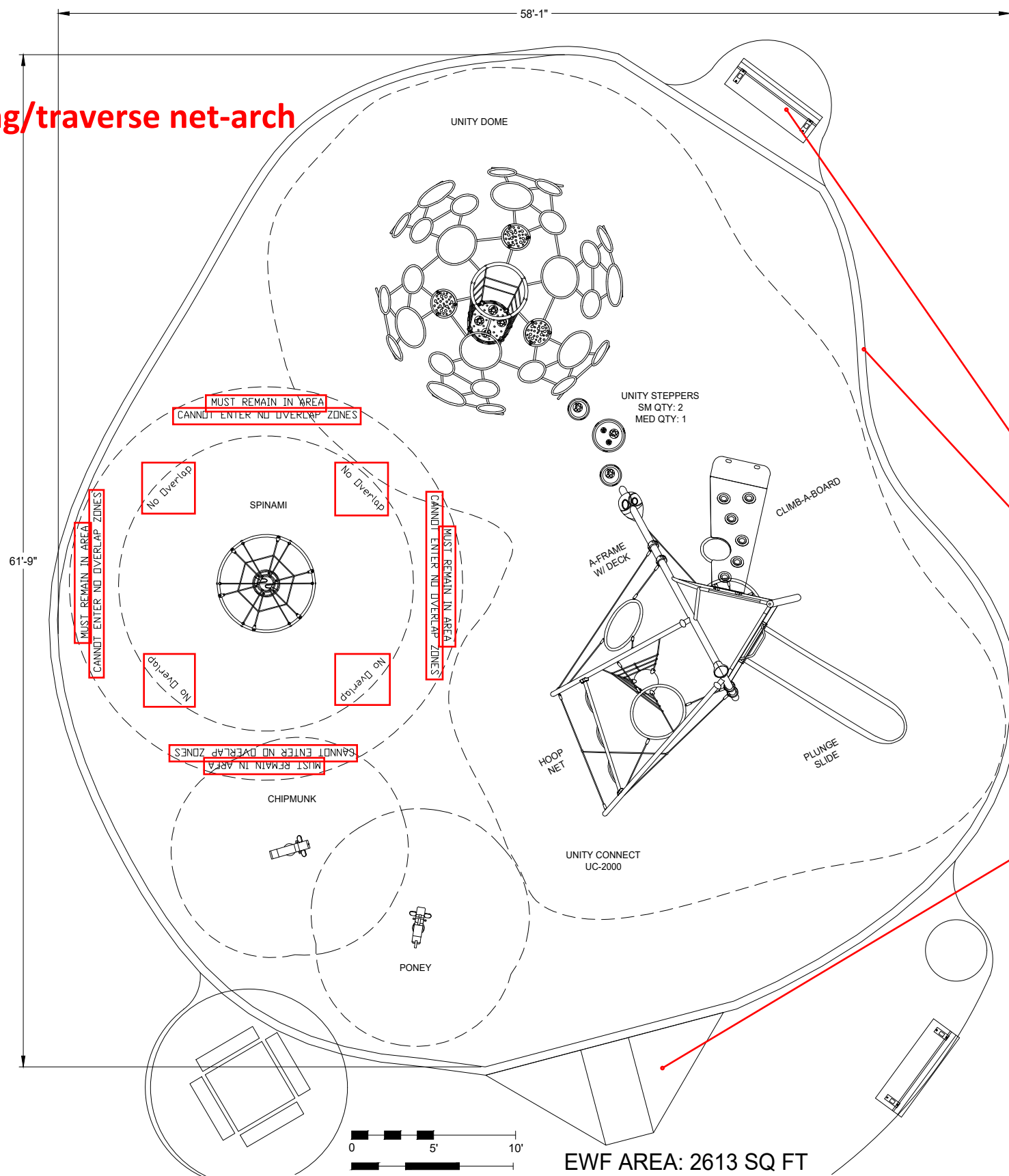
This sheet is intended to show the playground equipment. See the playground option plan view for correct playground envelope and other improvement locations.



Option C

Highlights:

- * no swing
- * open ended climbing/traverse net-arch structure
- * rockers
- * spinner
- * dome climber
- * stepping forms



final alignment of playground envelope site amenities ada ramp to be determined

This sheet is intended to show the playground equipment. See the playground option plan view for correct playground envelope and other improvement locations.

Option C



BUILDING COMMUNITY THROUGH PLAY

P.O. Box 2410 Issaquah, WA 98027
Toll Free: 1.800.726.0031
www.nwplayground.com
sales@nwplayground.com

EQUIPMENT SIZE:

USE ZONE:

AREA:
SEE PLAN

PERIMETER:

FALL HEIGHT:
8 Ft.

USER CAPACITY:
74

AGE GROUP:
5-12

ADA SCHEDULE	Total Elevated Play Activities:	
	Accessible Elevated Activities	Accessible Ground-Level Activities
Required	X	X
Provided	X	X

- ASTM F1487-17
- CPSC #325



PROJECT NO:
IHD_233_22B

SCALE:
1/8" = 1'-0"

DRAWN BY:
BPL

Paper Size

DATE:
12-May-22

B

LORRAINE ELLIS PARK

OPTION B