



Homeowner Incentive Program (HIP) Update

Ingrid Enschede, Whatcom County Public Works Natural Resources

Lake Whatcom Policy Group Meeting

September 23, 2020



HIP History

- HIP Pilot (HIP 1.0) 2011-2015
 - Washington State Department of Ecology grant-funded
 - City + county Silver Beach Creek neighborhood (~1,300 eligible properties)
 - 16 BMPs offered; one program for all properties
 - City managed; city/county staffed including project design
- HIP 2.0 2017-present
 - Primarily city funded with county contribution
 - All of basins 1 and 2 (~2,600 eligible properties)
 - 5 BMPs offered; two tiers (target & DIY native landscaping)
 - County managed; staffed by Whatcom Conservation District
 - Homeowners use private contractors for design/labor OR DIY with workshops and WCD help



2020 Updates—COVID response

- In-person workshops cancelled
 - Online workshop option for DIY program
 - Professional training workshops on hold
- Safety protocol: <https://www.lakewhatcomhip.org/covid19safety/>
- Virtual info session (June 23)
- Native landscaping video tour: <https://www.lakewhatcomhip.org/general-program/>
- HIP homeowner spotlight videos



Homeowner Spotlight Video Filming



BTV-10 staff helped develop a script and filmed DIY program ambassadors Anthony and Sherah Quattrocchi showcasing their new native landscaping with WCD staff Emily Hirsch.



2020 Updates—Participation

- Target Program engagement
 - 10 initial site visits in 2020
 - 64% decrease from 2019 (28 initial site visits 2019)
 - Current Status: 16 projects in design-construction phase
- DIY Program engagement
 - 37 households registered for a workshop (4 in person; 33 online)
 - 24 % decrease from 2019 (49 workshop participants in 2019)
 - Current Status: 13 projects in design-construction phase

2020 Updates—Project examples (Target)



A large lawn project underway in Geneva includes dispersion trenches and native landscaping, total improvement area is 23,181 square feet.

2020 Updates—Project examples (DIY)



This DIY project in Silver Beach Creek used rocks as edging and to help keep mulch in place on a slope, total improvement area is 1,071 square feet. The homeowners are serving as ambassadors for HIP.

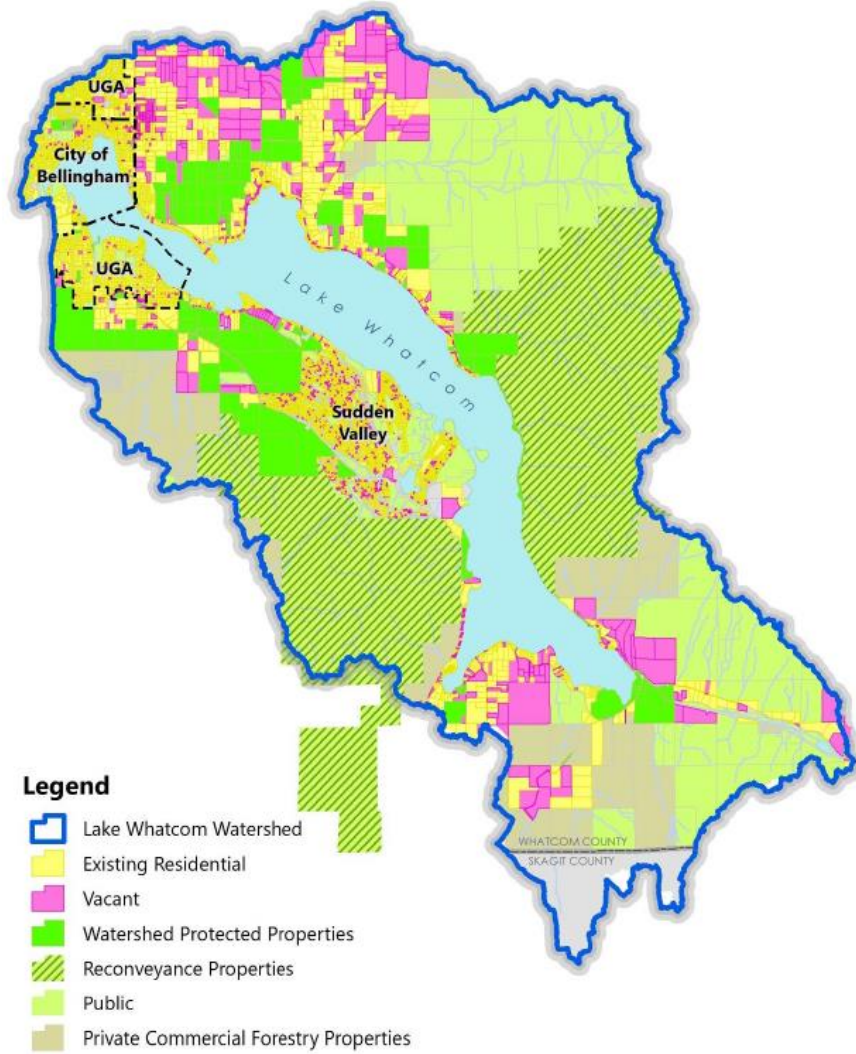


2021 Program Changes—Background

- Transitioning to each jurisdiction funding their own share
 - County Lake Whatcom Stormwater Utility began collecting fees 2020
- Expansion to Basin 3
 - Whatcom County eligible properties goes from ~ 1,900 to ~ 5,100
 - City eligible properties remains ~ 800
- Evolution of program to adapt to different circumstances within city and county jurisdictions



2021 Program Changes—Background



City of Bellingham

- Urban residential neighborhoods
- ~25% of the watershed population
- Most areas drain to treatment facilities
- 6 new capital treatment projects currently identified in plan

Whatcom County

- Mix of urban & rural residential neighborhoods, watershed protected properties, and private forestry
- ~75% of the watershed population
- Significant area remains for additional treatment facilities
- 29 potential new capital projects currently identified in plan
 - Subwatershed master planning underway



2021 Program Changes – County Goals

- Overall Lake Whatcom management goal of reducing phosphorus runoff efficiently to protect water quality
 - Capital/larger-scale projects offer more phosphorus reduction for the investment
- Focus county resources to meet TMDL objectives as quickly as possible
 - 29 potential capital projects currently identified
 - 18 private stormwater facilities offer options for neighborhood-scale homeowner retrofits



2021 Program Changes – County Direction

- Combine elements of the current DIY and target program into a new "hybrid" program for all county properties
 - Streamline and simplify to reduce administration costs
 - Focus on smaller native landscaping projects – most popular
 - Reduce barriers to increase participation
 - Maintenance agreement only
 - Options for labor reimbursement
 - Maintain same \$1.30/square foot reimbursement rate for all
- Continue partnership with Whatcom Conservation District



2021 Program Changes – City Direction

- Continue existing program with minor changes
 - Based on audience research from 2017 and original HIP (2011-2016)
 - Incorporates expertise developed in transitional program (2017-2020)
- More detail to come in December meeting



2021 Program coordination

Website	Still directed by address lookup: remains the same for city residents; changes for county
Outreach	Maintain HIP brand, use existing materials, work with watershed ambassadors
Technical Materials	Continue to use HIP Design Manual, Standard Details, and Material Specifications as applicable
Partnerships	Coordinated as feasible amongst jurisdictions



Questions