

NOTE FOR NIGHT CLOSURE:

1. FLASHING LIGHTS ON SIGNS.
2. STEADY BURNING LIGHTS FOR DELINEATION AND CHANNELIZATION.

SIGN SPACING

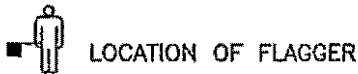
SPEED MPH	DISTANCE FROM TAPER TO 1ST		
	SIGN	2ND SIGN	3RD SIGN
25MPH	200'	400'	400'
35MPH	300'	600'	600'

TAPER LENGTHS

SPEED MPH	LANE WIDTHS		
	10'	11'	12'
25	260'	275'	300'
35	350'	385'	420'

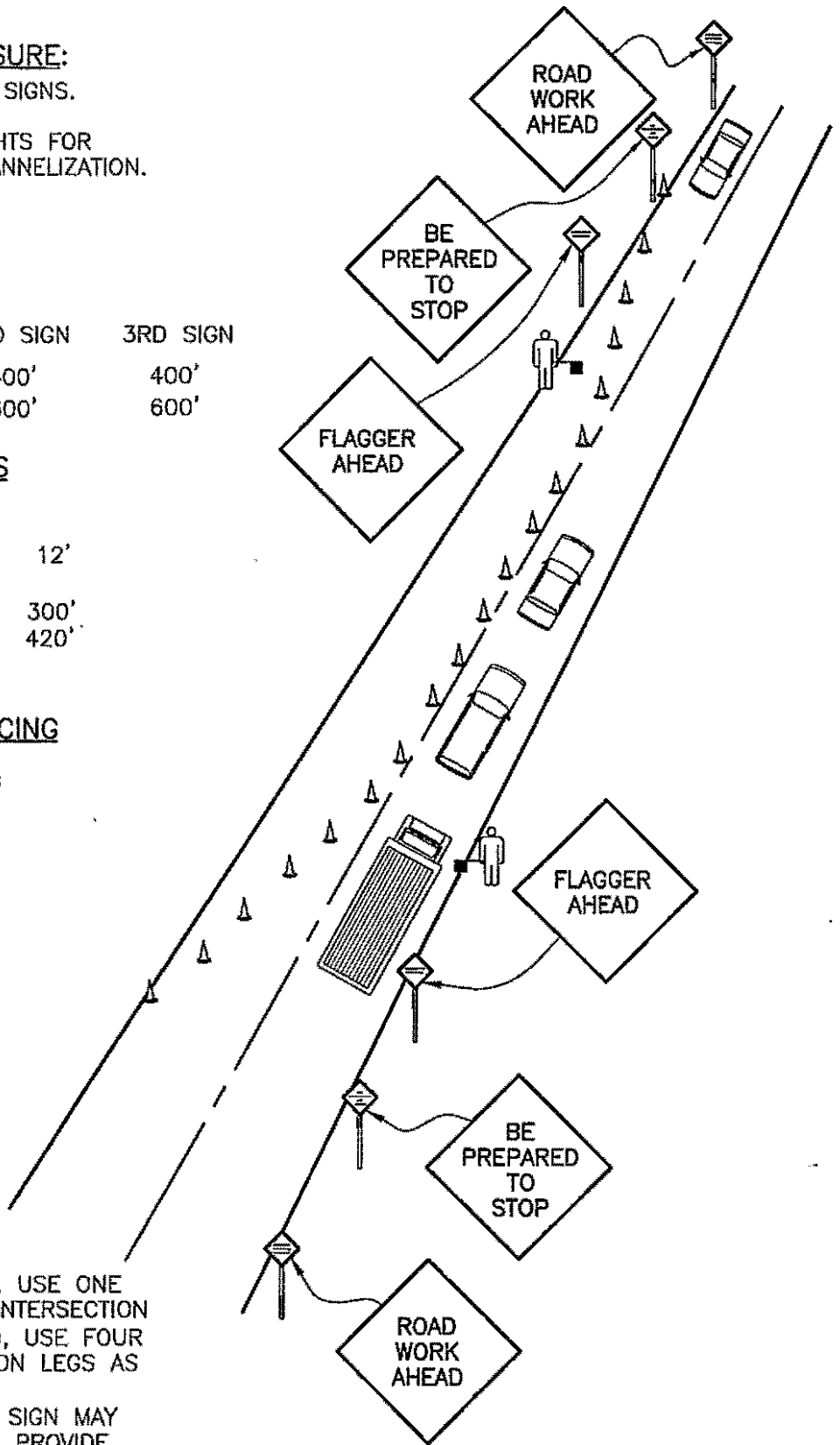
TRAFFIC CONE SPACING

SPEED MPH	SPACING
25	25'
35	35'



NOTES:

LOW VOLUMES (2 LANES), USE ONE FLAGGER AT CENTER OF INTERSECTION
 HIGH VOLUMES (4 LANES), USE FOUR FLAGGERS ON INTERSECTION LEGS AS SHOWN.
 "ONE LANE ROAD AHEAD" SIGN MAY ALSO BE NECESSARY TO PROVIDE ADEQUATE ADVANCE WARNING.



NOT TO SCALE

APPROVED

Vern J. Routh
 City Engineer

1/11/05
 Date

CITY OF BELLINGHAM
 FLAGGER CONTROL
 FOR LANE CLOSURES

DRAWING
 TC-330