

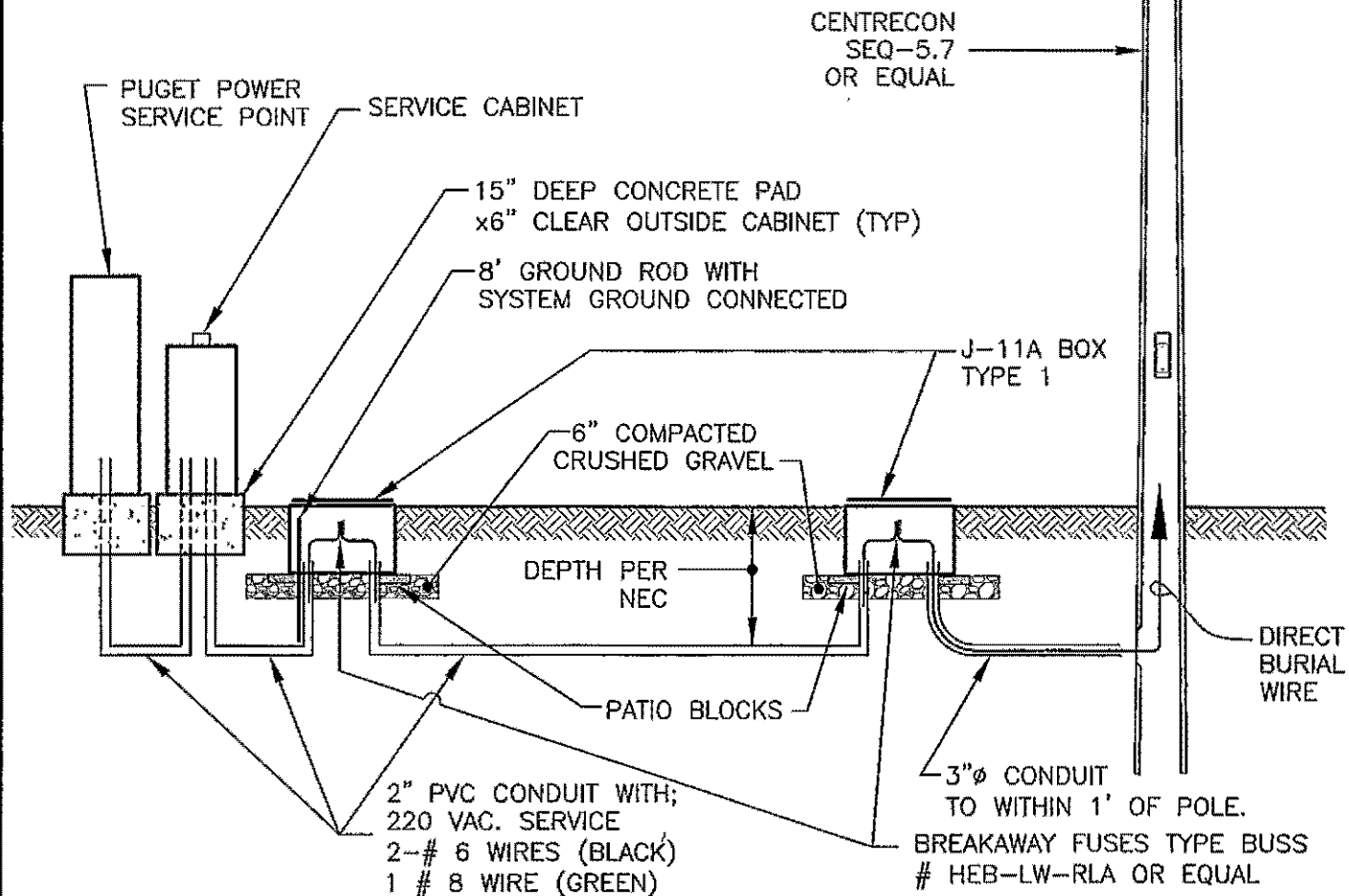
STERNER EX20 HPS OR EQUAL

PHOTO CELL LC4536LA

MOUNTING
HEIGHT
=18'-8"

NOTE:

AN ILLUMINATION CONTROLLER AND SERVICE CABINET SHALL BE USED FOR ALL LIGHTING SYSTEMS UNLESS OTHERWISE APPROVED BY THE ENGINEER. USE SECTION 4-13.22 OF THE DEVELOPMENT STANDARDS FOR ILLUMINATION SYSTEM SPECIFICATIONS.



APPROVED

Royal Poulter
City Engineer

11/29/04
Date

CITY OF BELLINGHAM
RESIDENTIAL STREET LIGHT
AND SYSTEM FUSING

DRAWING
EL-400